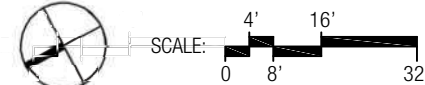
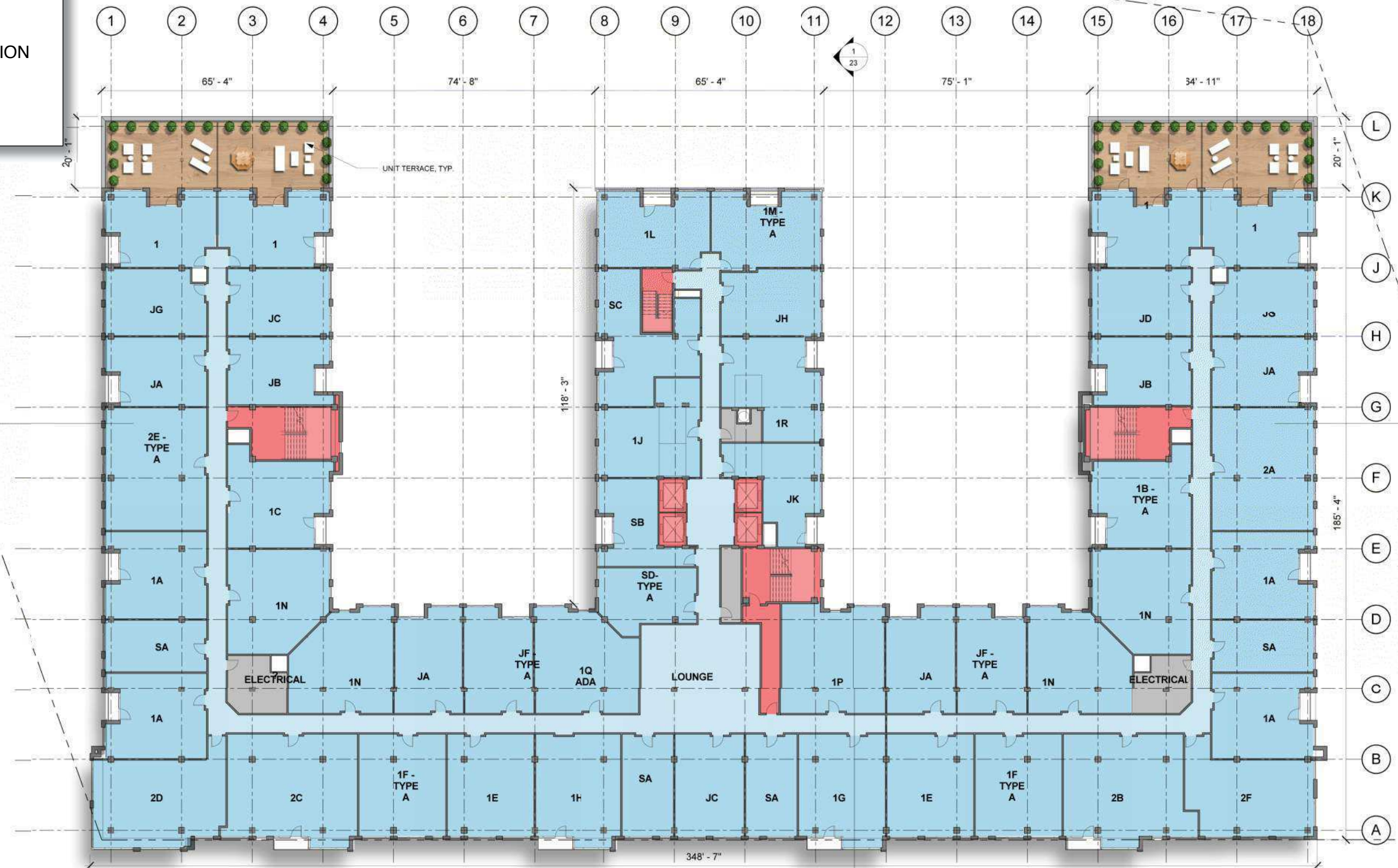


- RESIDENTIAL: UNITS
- RESIDENTIAL: COMMON
- CIRCULATION
- SERVICE



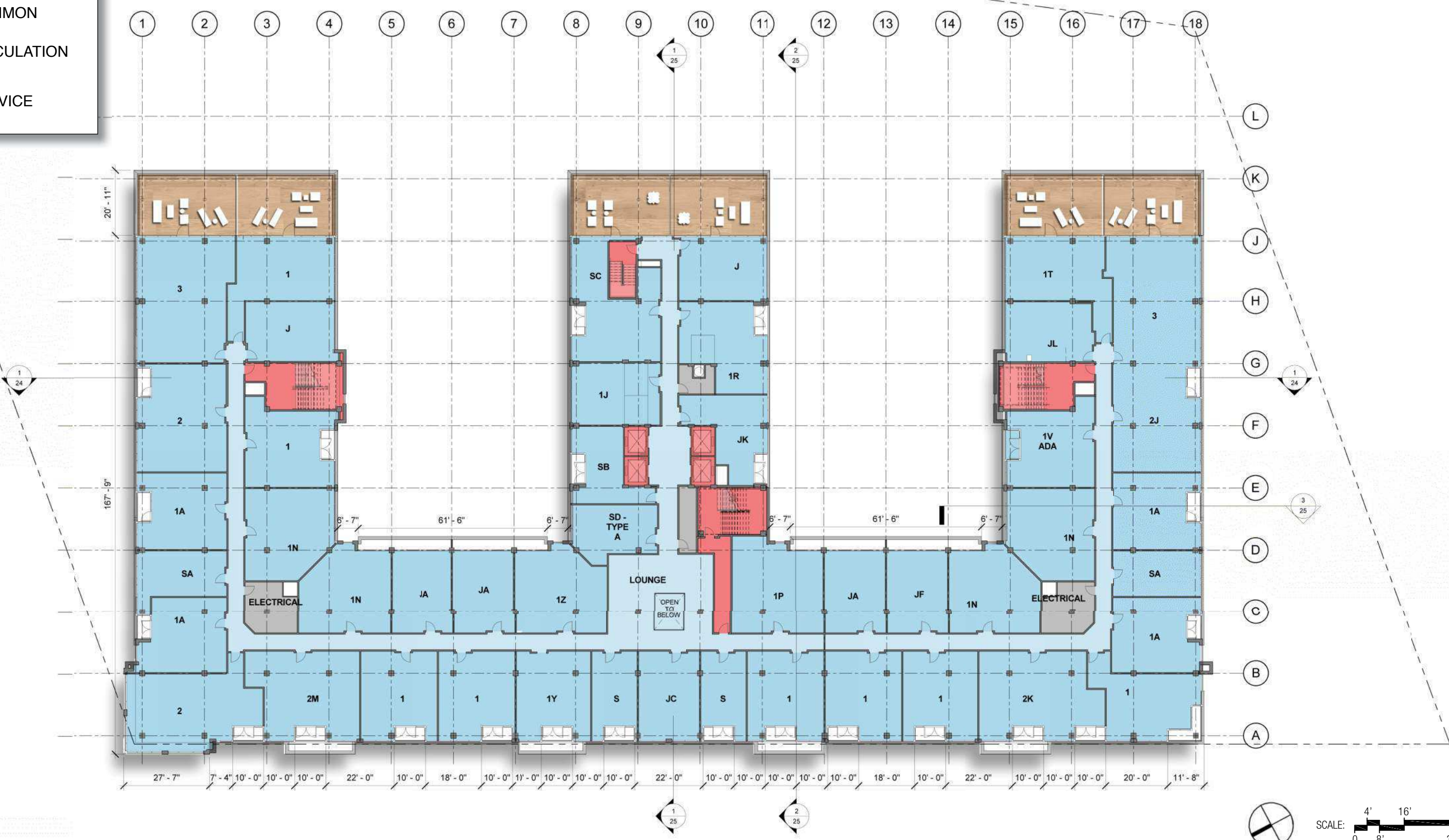
1900 HALF STREET

Square 666 Lot 15 / 1900 Half Street SW, Washington, DC · Douglas Development Corporation · Antunovich Associates © · Dewberry Consultants LLC · Lee and Associates Inc.

Floor 7-8 Plan

ZONING COMMISSION
 District of Columbia
 May 20, 2016
 CASE NO. 16-01
 EXHIBIT NO. 15A3

- RESIDENTIAL: UNITS
- RESIDENTIAL: COMMON
- CIRCULATION
- SERVICE

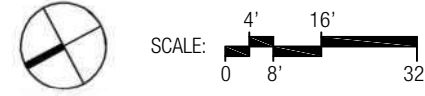


1900 HALF STREET




Square 666 Lot 15 / 1900 Half Street SW, Washington, DC · Douglas Development Corporation · Antunovich Associates © · Dewberry Consultants LLC · Lee and Associates Inc.





Floor 9 Plan

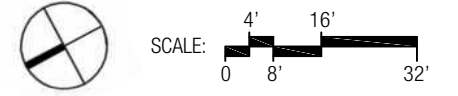
May 20, 2016





	EXISTING SLAB 109.29'
	REINFORCED ROOF SLAB 111.56'
	POOL DECK 114.29'

	AMENITY
	CIRCULATION
	RESTROOMS
	SERVICE

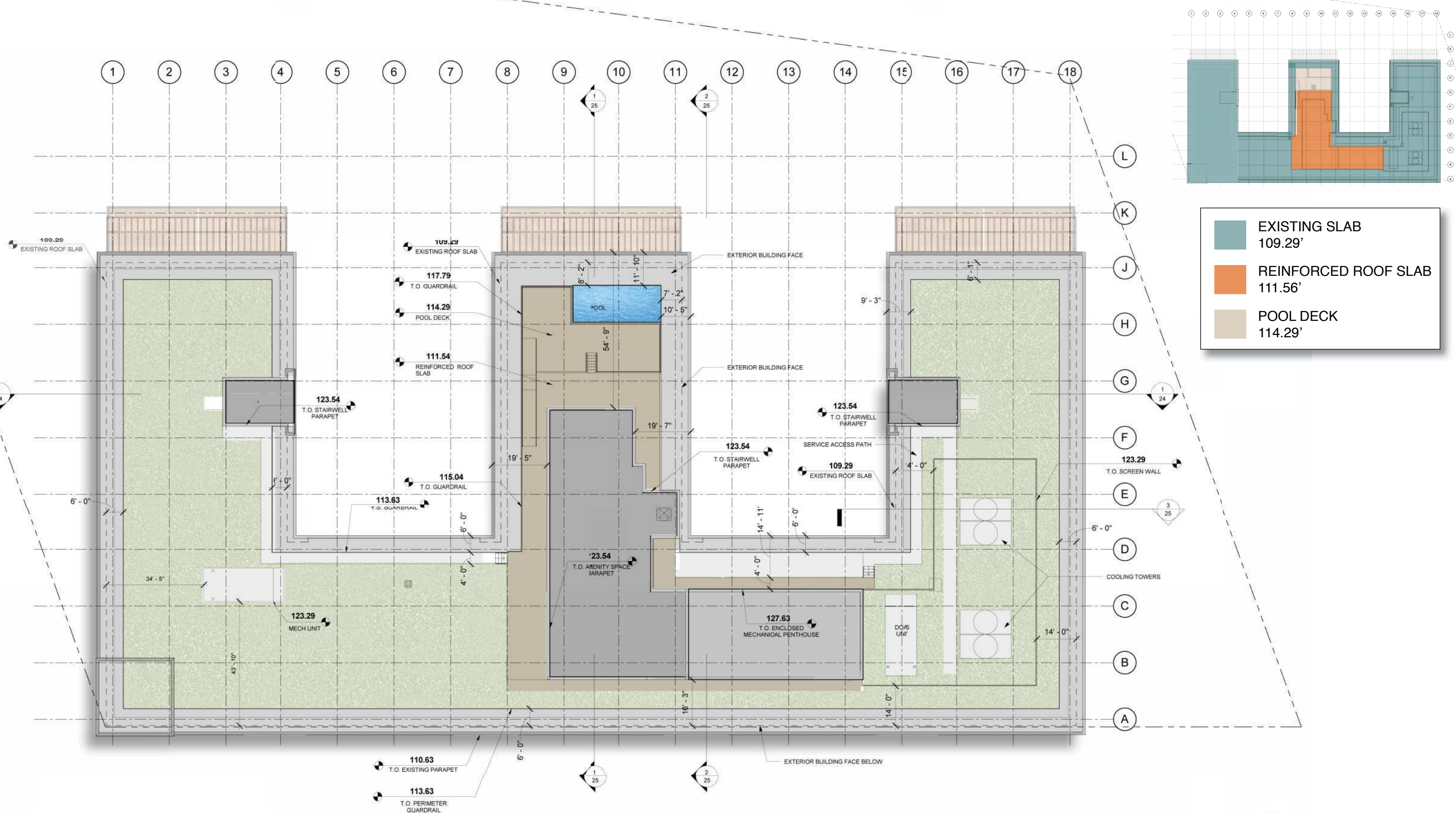


1900 HALF STREET

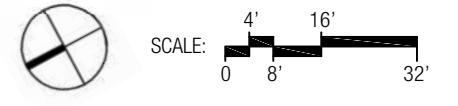
Square 666 Lot 15 / 1900 Half Street SW, Washington, DC · Douglas Development Corporation · Antunovich Associates © · Dewberry Consultants LLC · Lee and Associates Inc.

Penthouse Plan

May 20, 2016



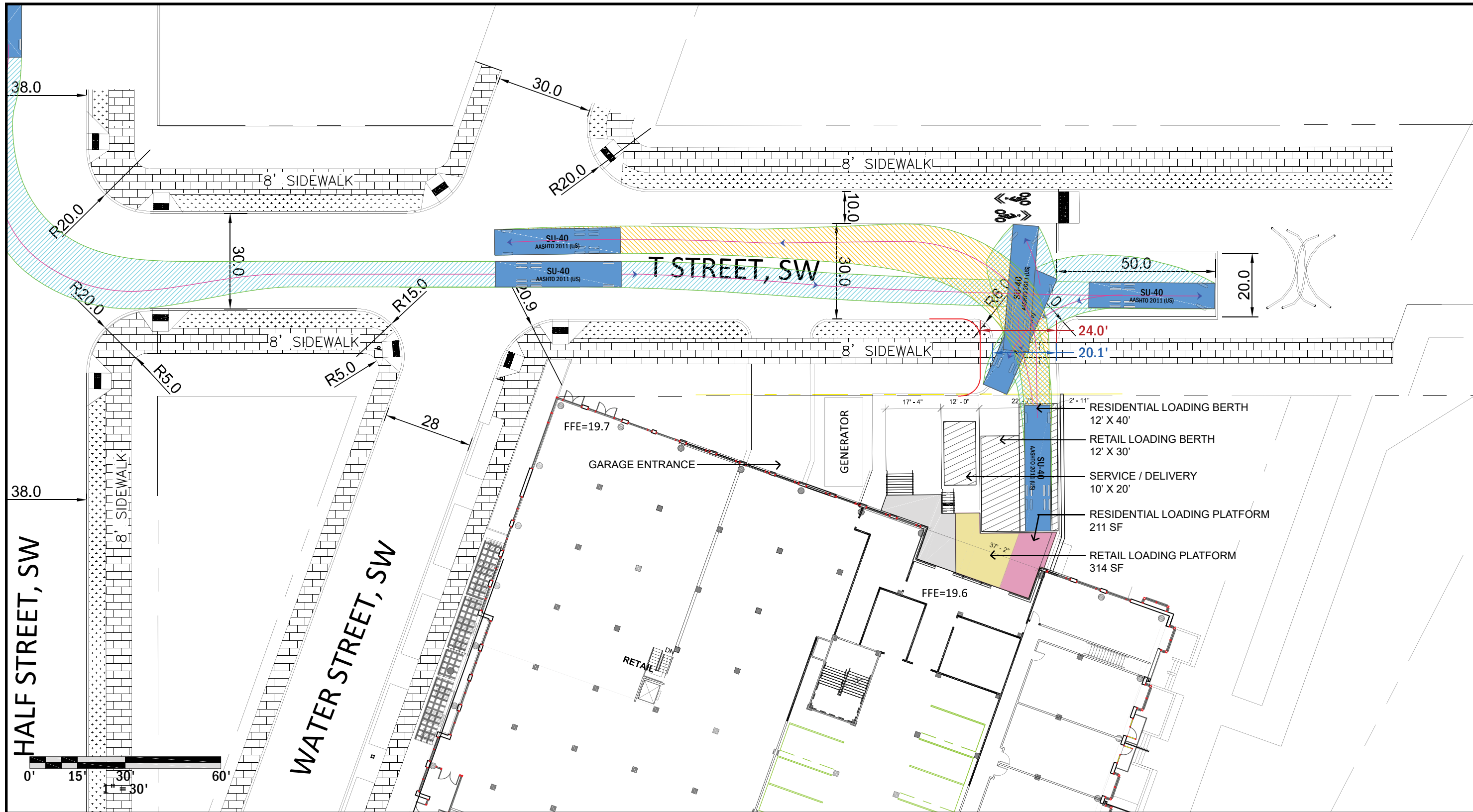
	EXISTING SLAB 109.29'
	REINFORCED ROOF SLAB 111.56'
	POOL DECK 114.29'



1900 HALF STREET

Square 666 Lot 15 / 1900 Half Street SW, Washington, DC · Douglas Development Corporation · Antunovich Associates © · Dewberry Consultants LLC · Lee and Associates Inc.

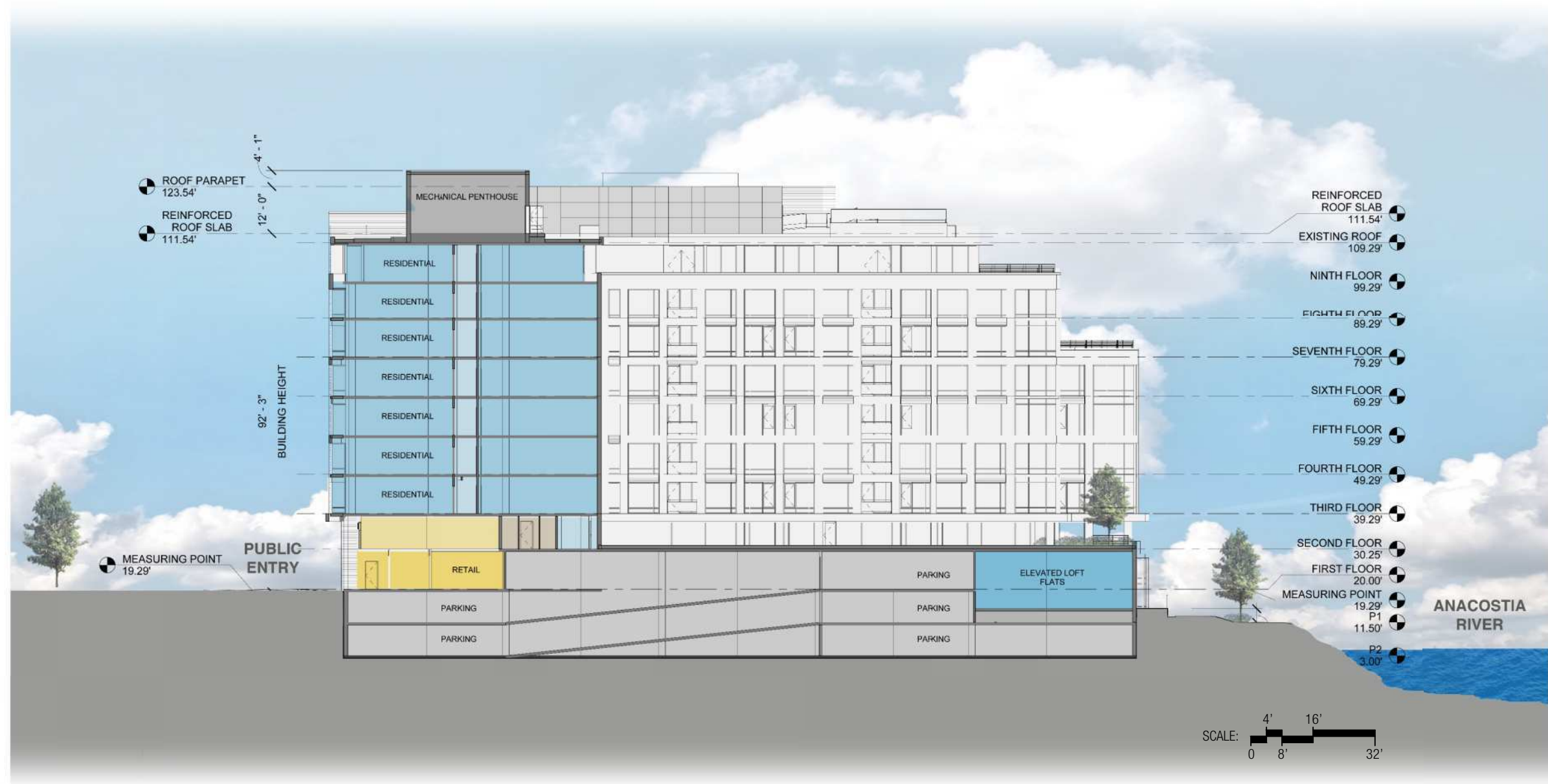
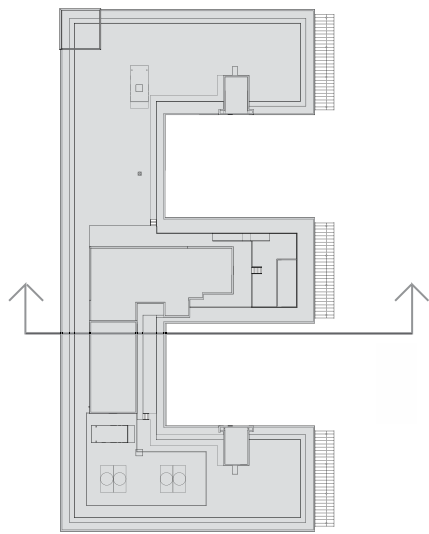
Roof Plan
May 20, 2016



40' TRUCK

1900 HALF STREET

Loading Dock Access

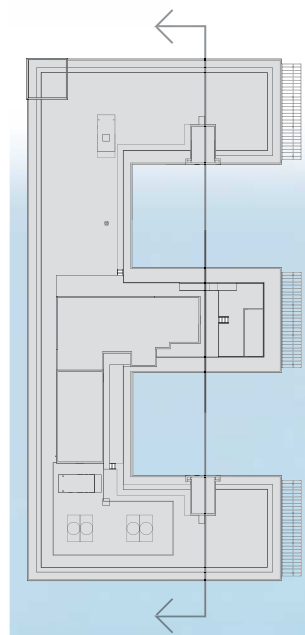


1900 HALF STREET

Square 666 Lot 15 / 1900 Half Street SW, Washington, DC · Douglas Development Corporation · Antunovich Associates © · Dewberry Consultants LLC · Lee and Associates Inc.

Building Section

May 20, 2016

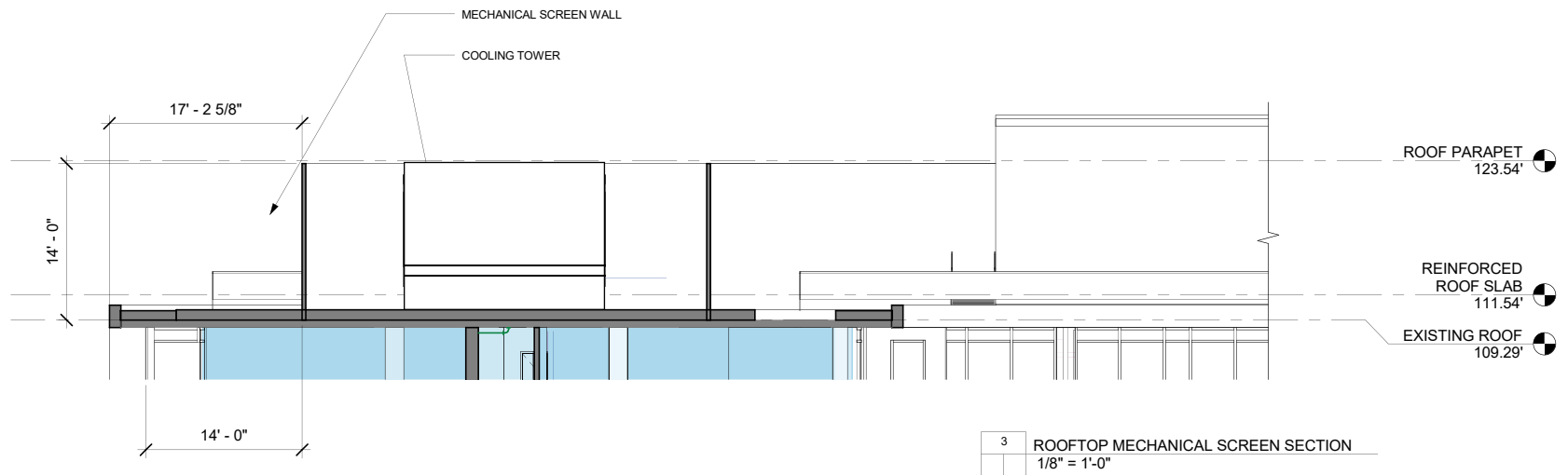
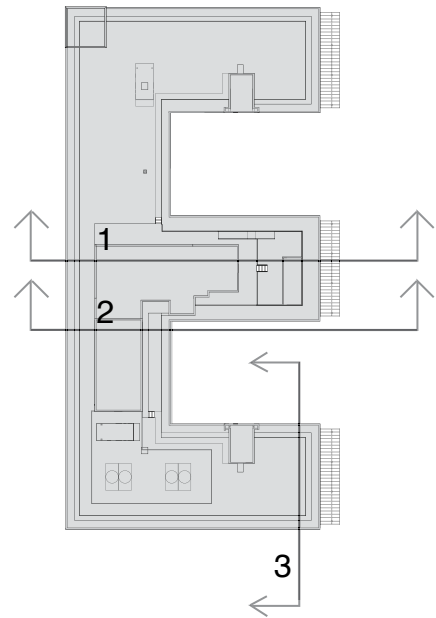


1900 HALF STREET

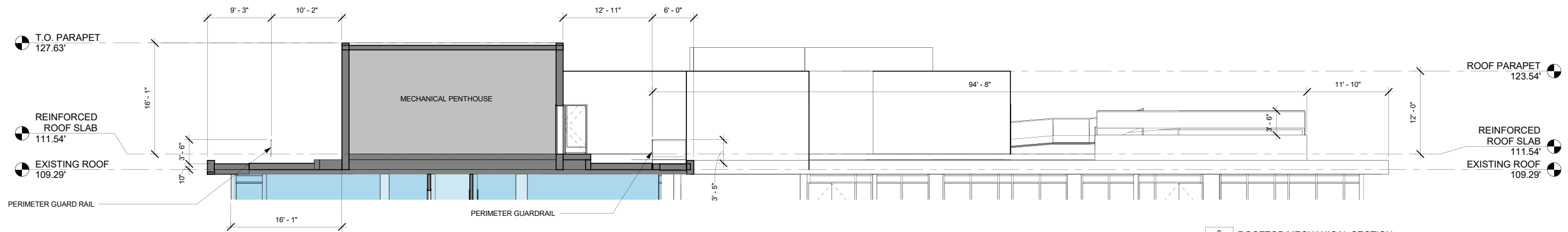
Square 666 Lot 15 / 1900 Half Street SW, Washington, DC · Douglas Development Corporation · Antunovich Associates © · Dewberry Consultants LLC · Lee and Associates Inc.

Building Section

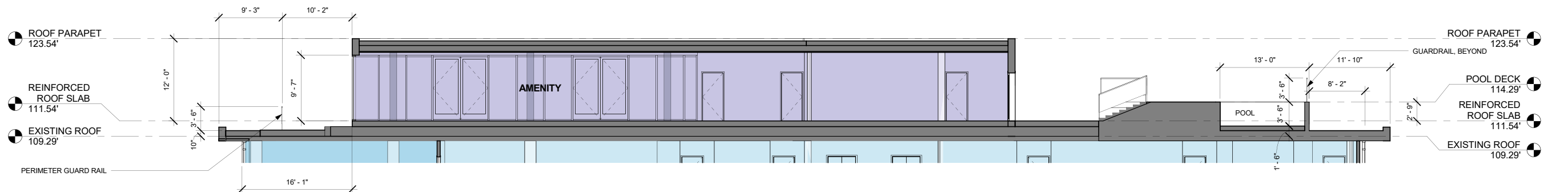
May 20, 2016



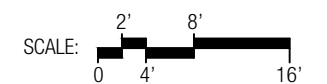
3 ROOFTOP MECHANICAL SCREEN SECTION
1/8" = 1'-0"

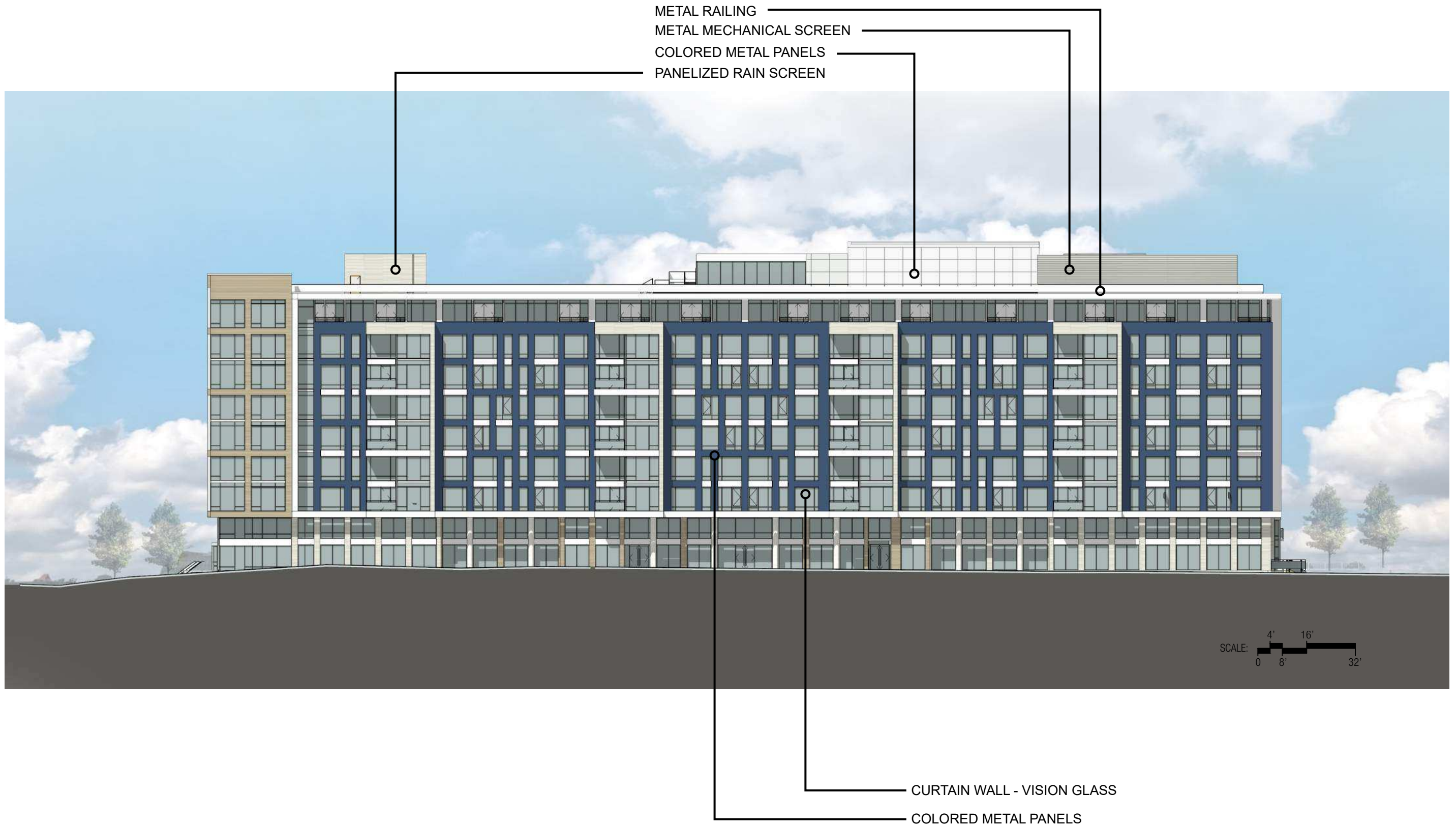


2 ROOFTOP MECHANICAL SECTION
1/8" = 1'-0"



1 ROOFTOP AMENITY SECTION
1/8" = 1'-0"



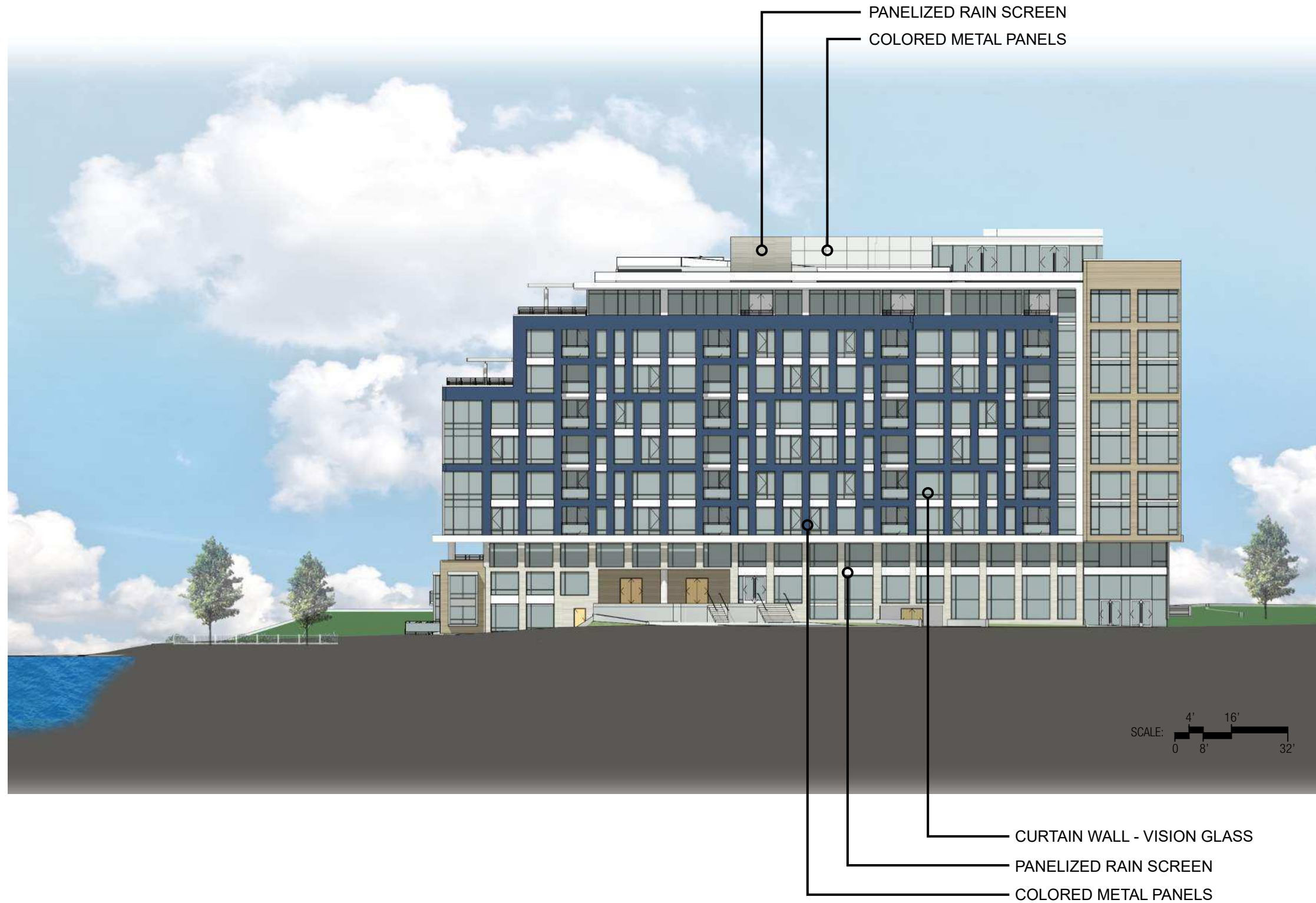


1900 HALF STREET

Square 666 Lot 15 / 1900 Half Street SW, Washington, DC · Douglas Development Corporation · Antunovich Associates © · Dewberry Consultants LLC · Lee and Associates Inc.

West (Water Street) Elevation

May 20, 2016

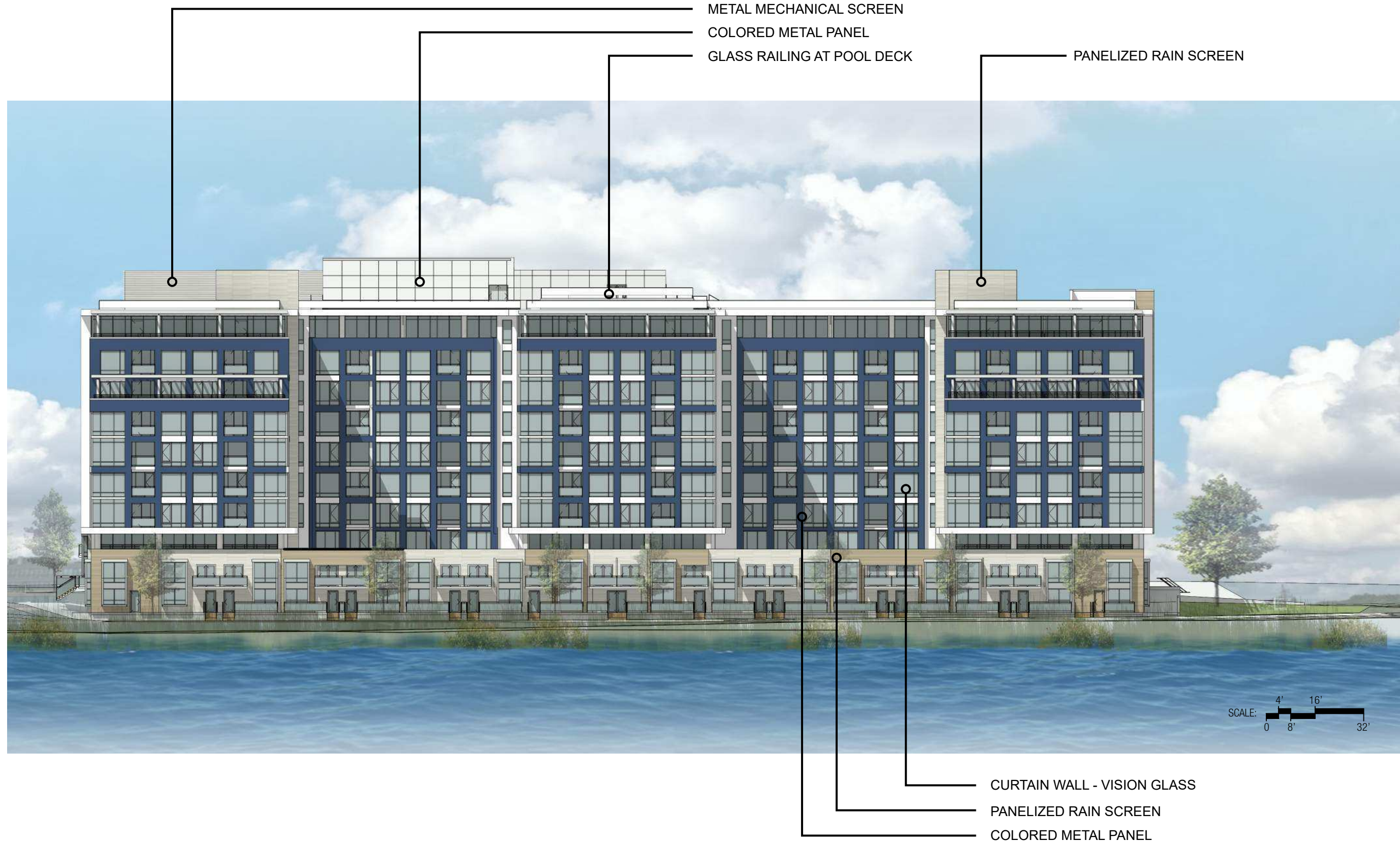


1900 HALF STREET

Square 666 Lot 15 / 1900 Half Street SW, Washington, DC · Douglas Development Corporation · Antunovich Associates © · Dewberry Consultants LLC · Lee and Associates Inc.

North Elevation

May 20, 2016

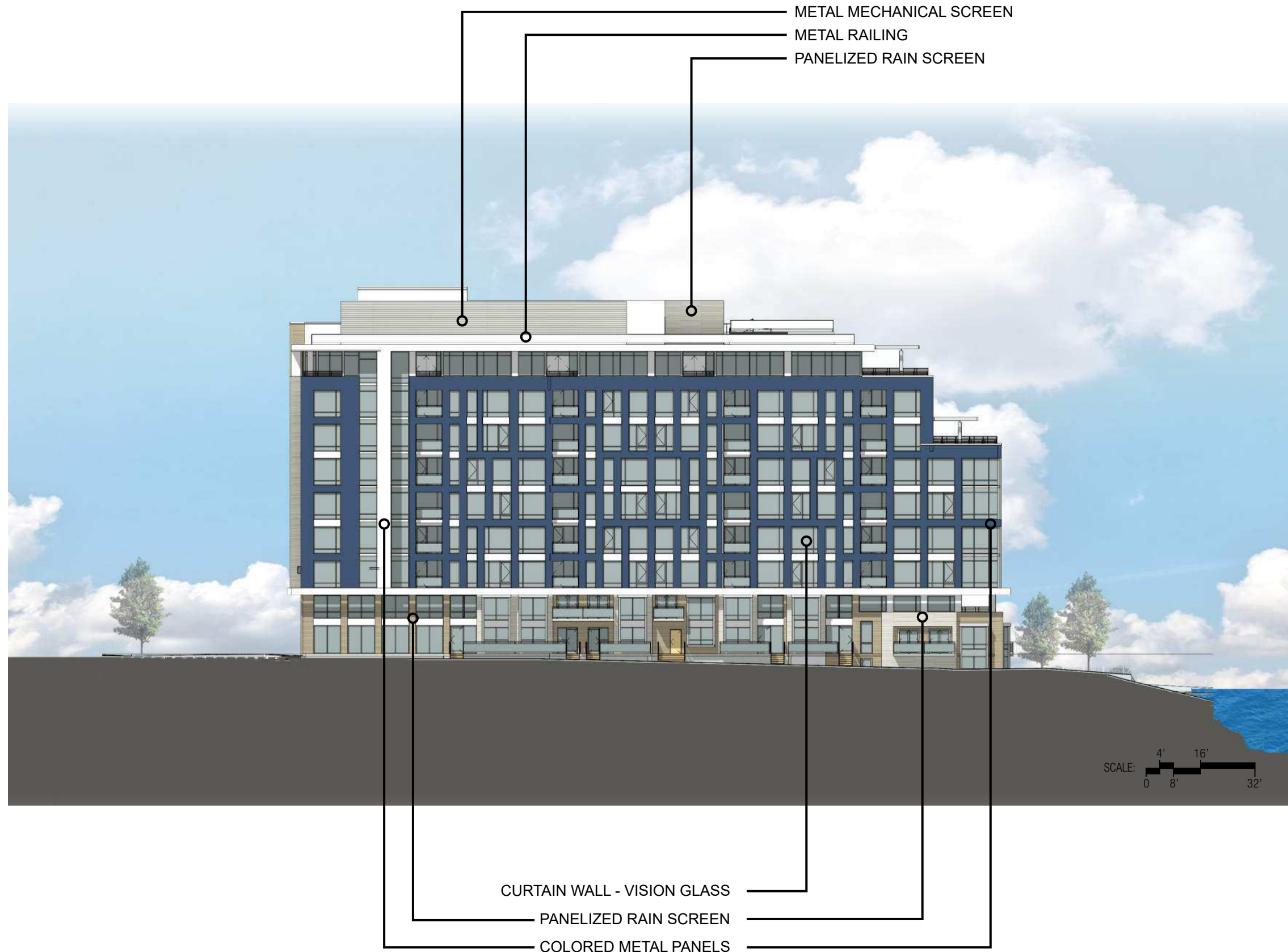


1900 HALF STREET

Square 666 Lot 15 / 1900 Half Street SW, Washington, DC · Douglas Development Corporation · Antunovich Associates © · Dewberry Consultants LLC · Lee and Associates Inc.

East Elevation

May 20, 2016

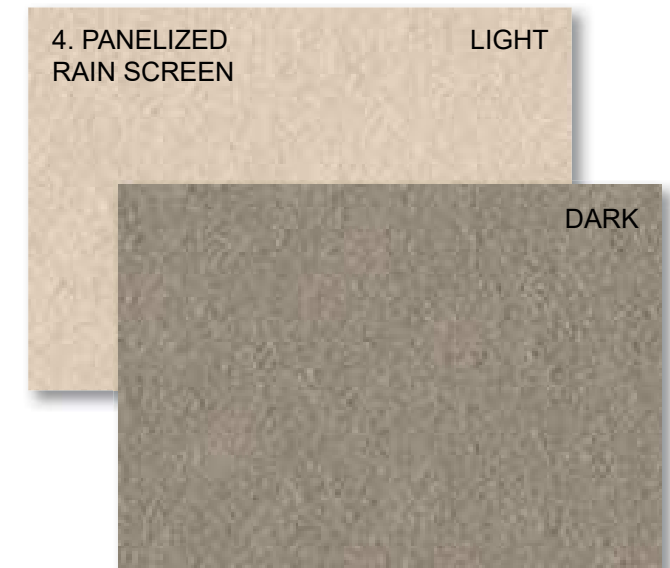
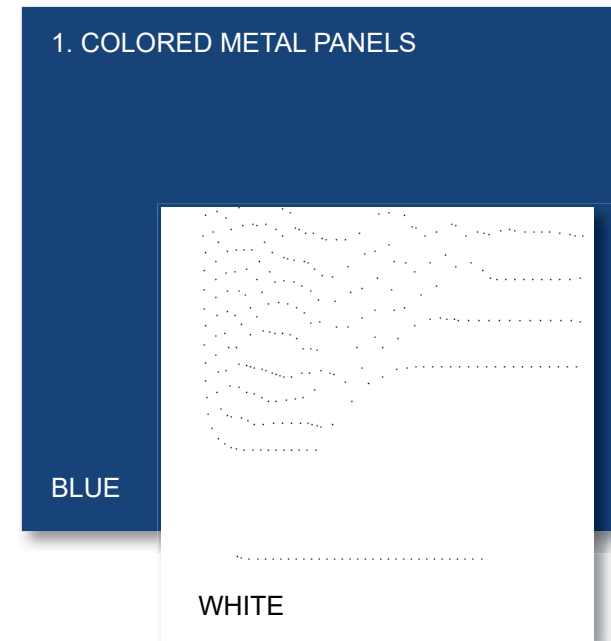
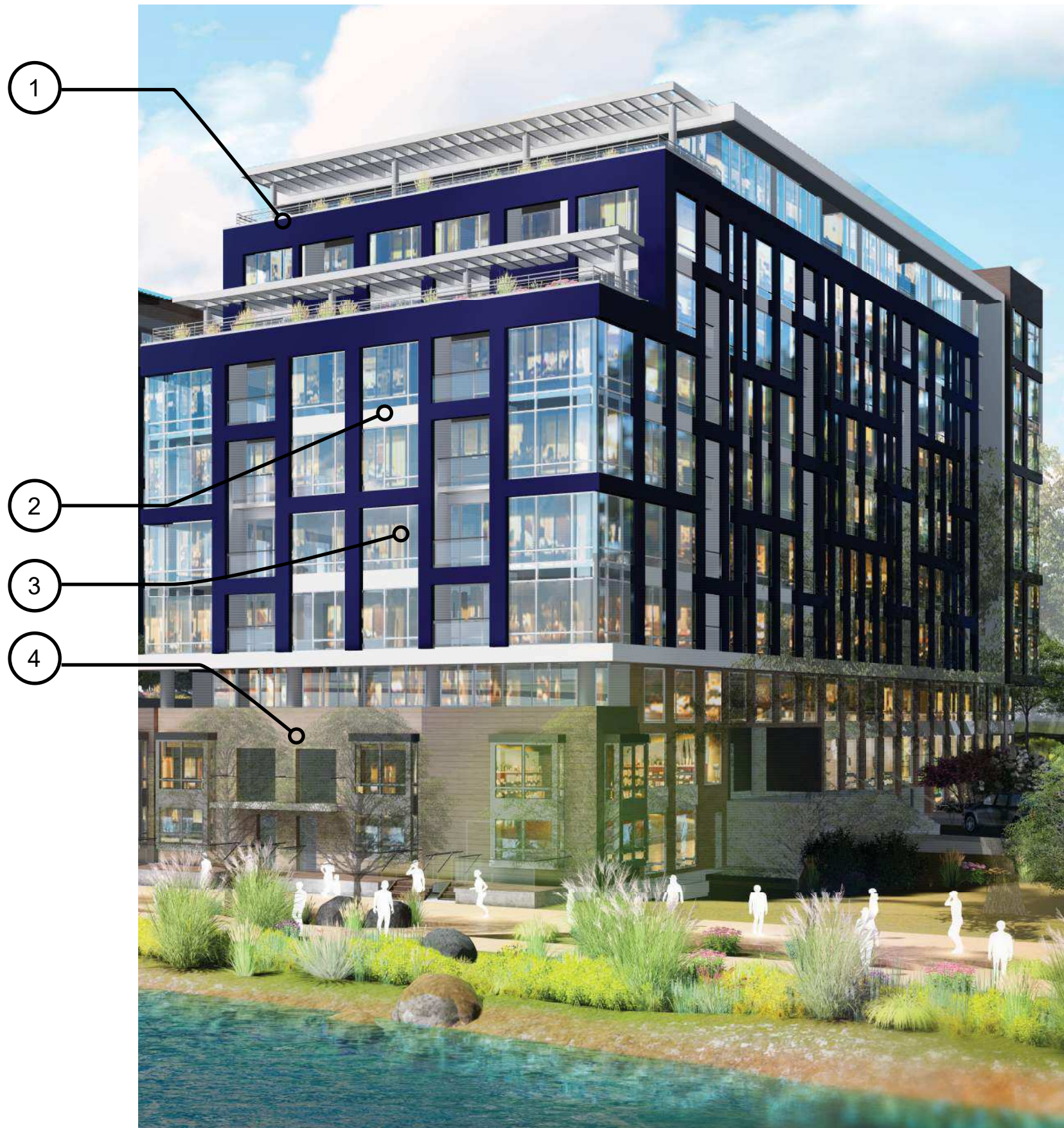


1900 HALF STREET

Square 666 Lot 15 / 1900 Half Street SW, Washington, DC · Douglas Development Corporation · Antunovich Associates © · Dewberry Consultants LLC · Lee and Associates Inc.

South Elevation

May 20, 2016

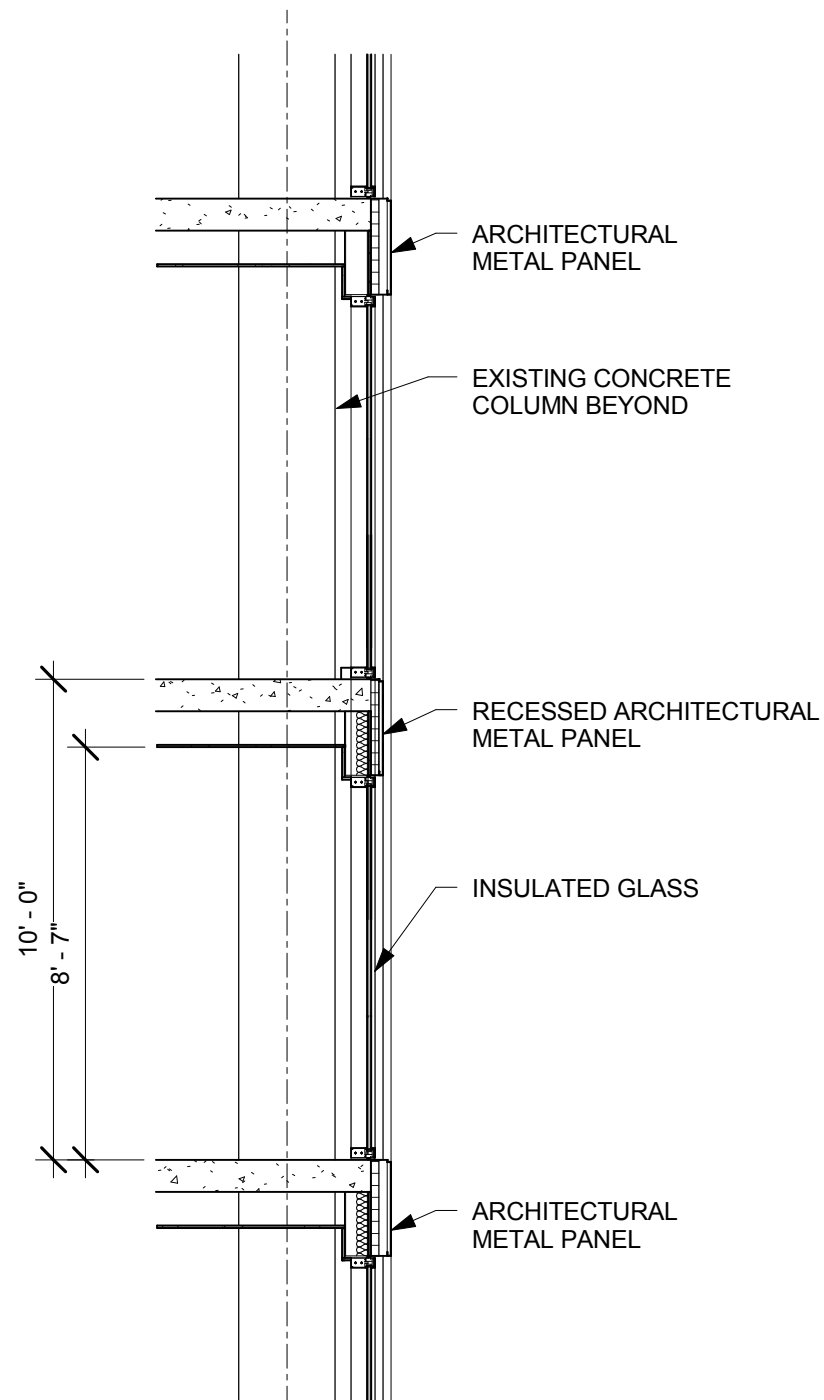
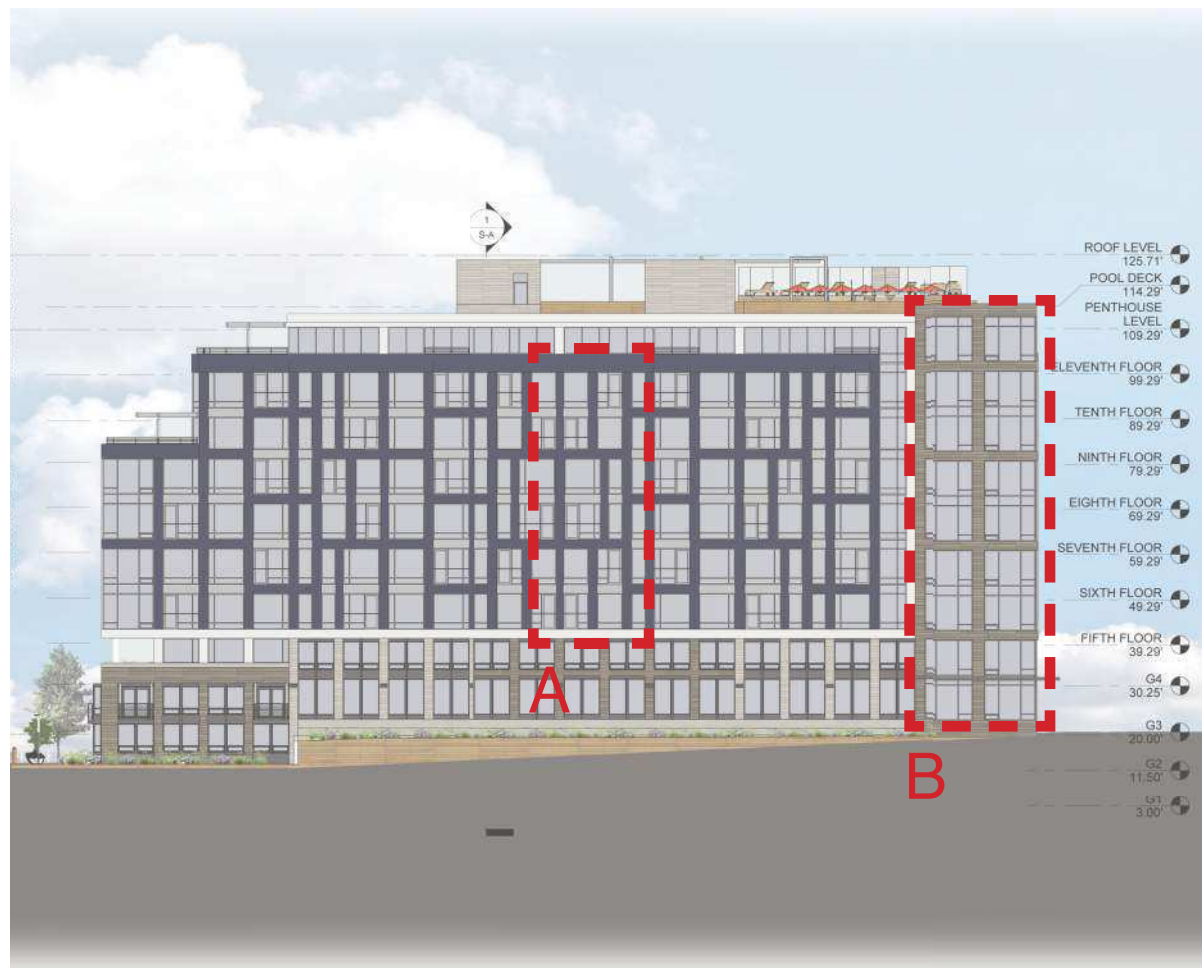


1900 HALF STREET

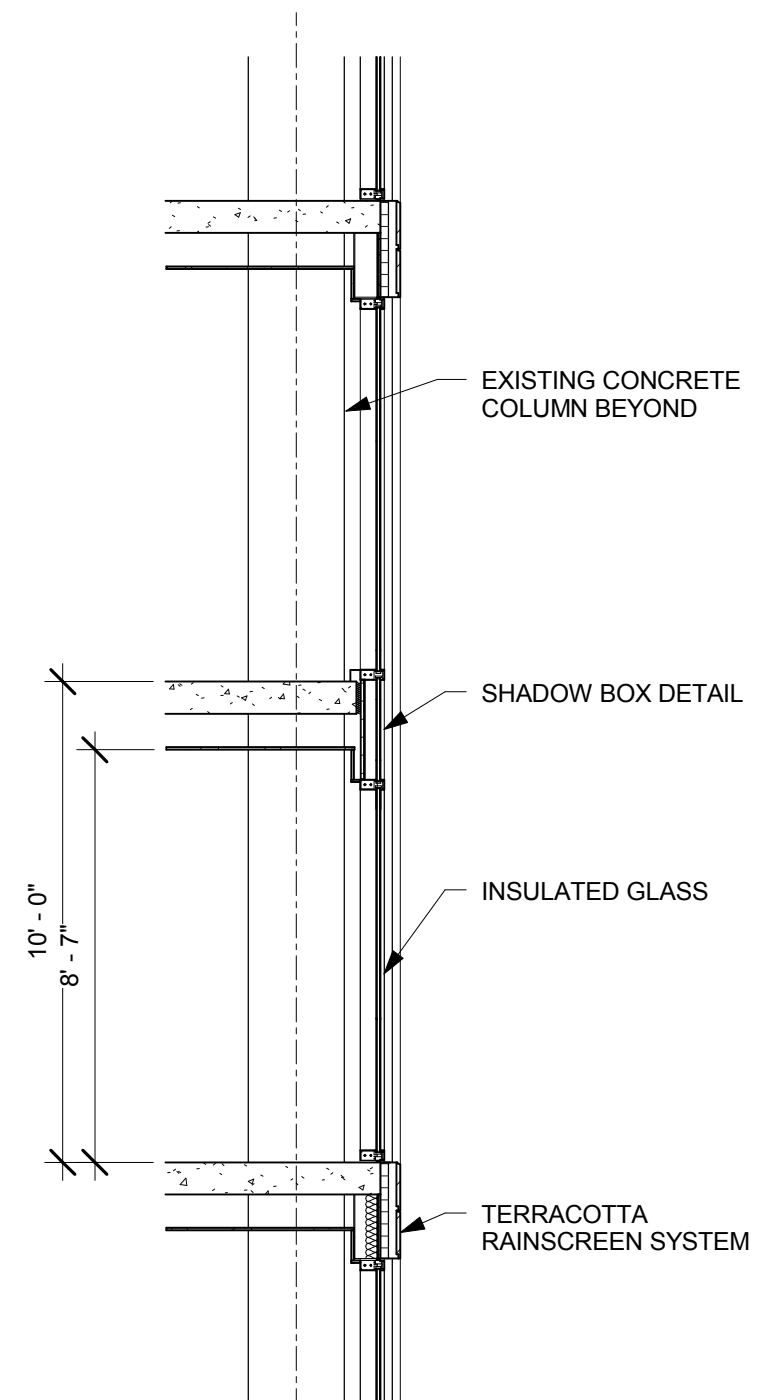
Square 666 Lot 15 / 1900 Half Street SW, Washington, DC · Douglas Development Corporation · Antunovich Associates © · Dewberry Consultants LLC · Lee and Associates Inc.

Proposed Materials

May 20, 2016



WALL SECTION A:
THROUGH METAL PANEL FACADE



WALL SECTION B:
THROUGH TERRACOTTA FACADE

1900 HALF STREET

Square 666 Lot 15 / 1900 Half Street SW, Washington, DC · Douglas Development Corporation · Antunovich Associates © · Dewberry Consultants LLC · Lee and Associates Inc.

Wall Sections

May 20, 2016



1900 HALF STREET

Square 666 Lot 15 / 1900 Half Street SW, Washington, DC · Douglas Development Corporation · Antunovich Associates © · Dewberry Consultants LLC · Lee and Associates Inc.

Overall View

May 20, 2016



1900 HALF STREET

Square 666 Lot 15 / 1900 Half Street SW, Washington, DC · Douglas Development Corporation · Antunovich Associates © · Dewberry Consultants LLC · Lee and Associates Inc.

View from the Anacostia River

May 20, 2016



1900 HALF STREET

Square 666 Lot 15 / 1900 Half Street SW, Washington, DC · Douglas Development Corporation · Antunovich Associates © · Dewberry Consultants LLC · Lee and Associates Inc.

View from Half Street

May 20, 2016



1900 HALF STREET

Square 666 Lot 15 / 1900 Half Street SW, Washington, DC · Douglas Development Corporation · Antunovich Associates © · Dewberry Consultants LLC · Lee and Associates Inc.

View from Courtyard

May 20, 2016